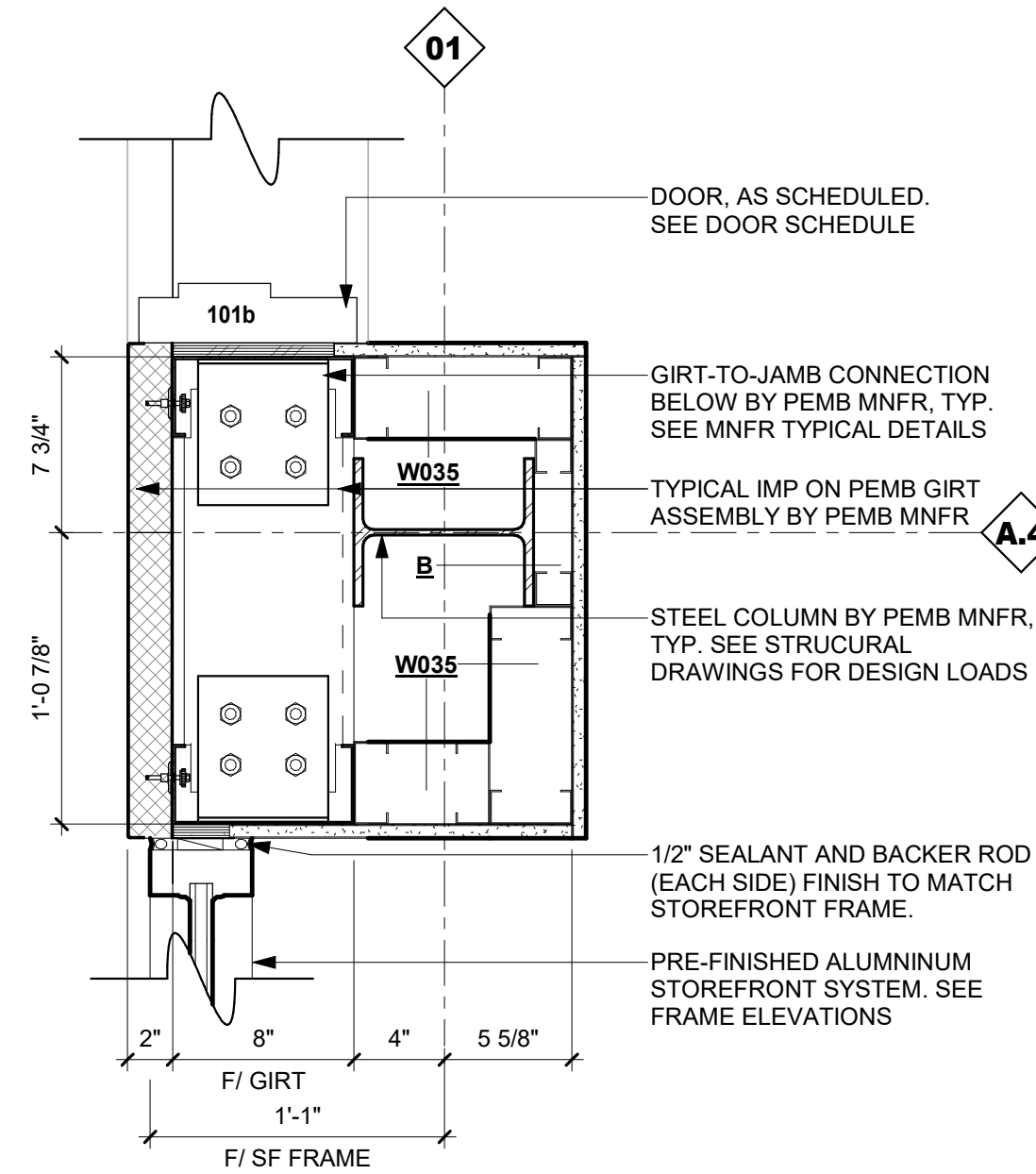
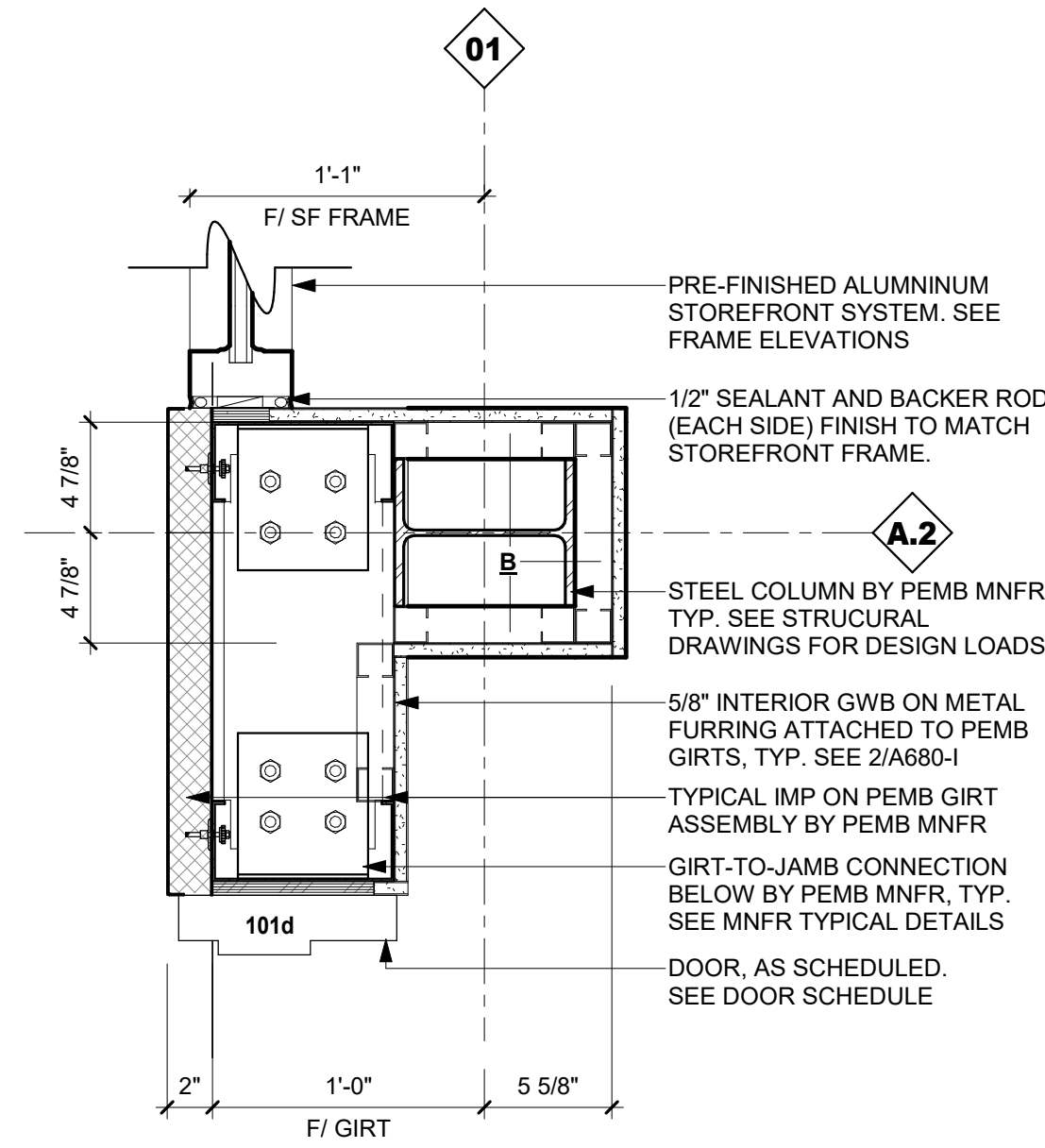


Copyright (c) 2025 Praxis3, LLC
All reports, plans, specifications, computer files, field data, notes and other documents and instruments prepared by Praxis3 and retain all copyright law, statutory and other intellectual rights, including copyright therein.
This drawing may not be reproduced in whole or in part without written permission of Praxis3. It is to be returned upon request. Scales as stated are valid on the original drawing.

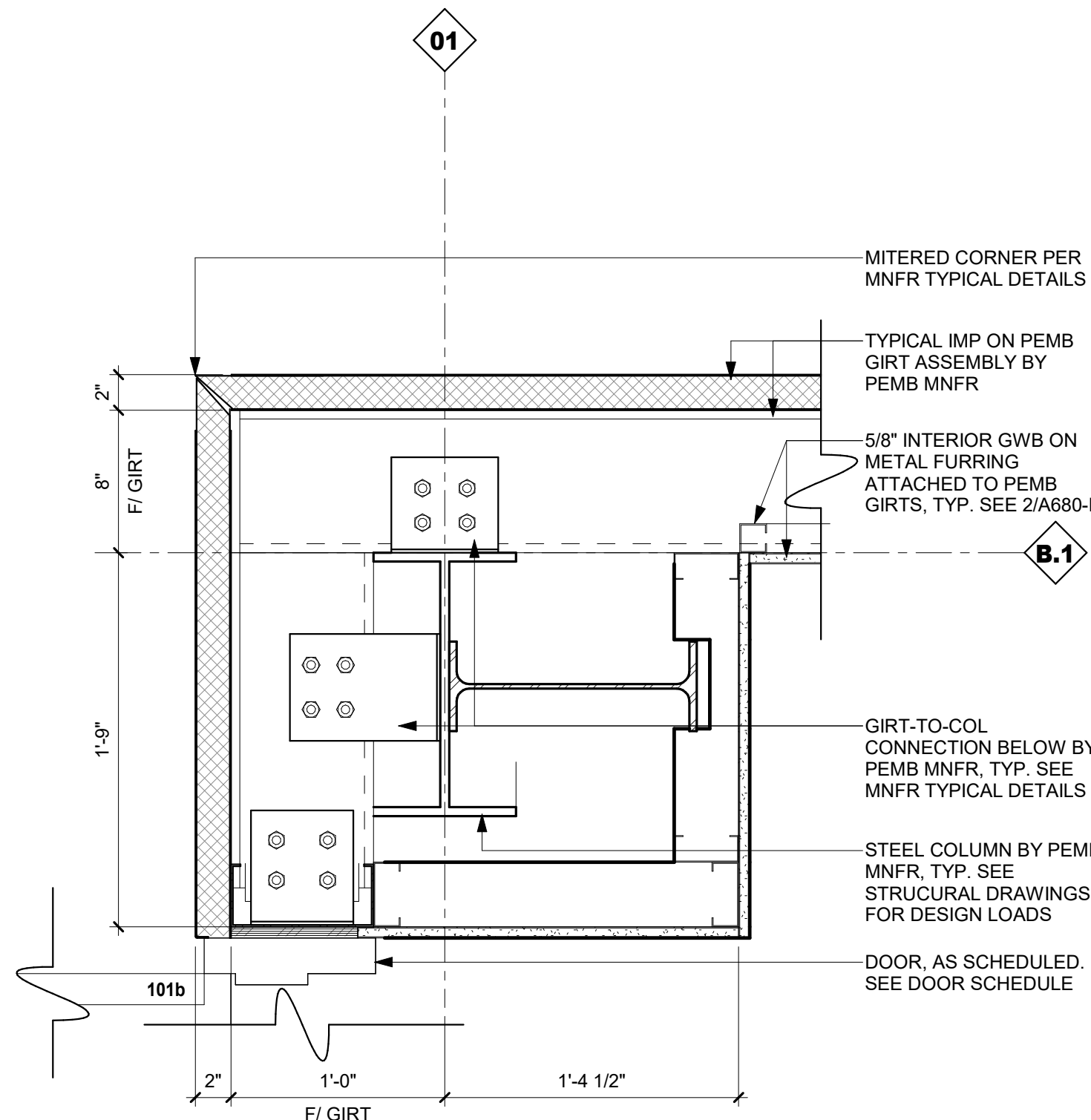
Rev	Date	Comments
	05/22/26	PERMIT & BID



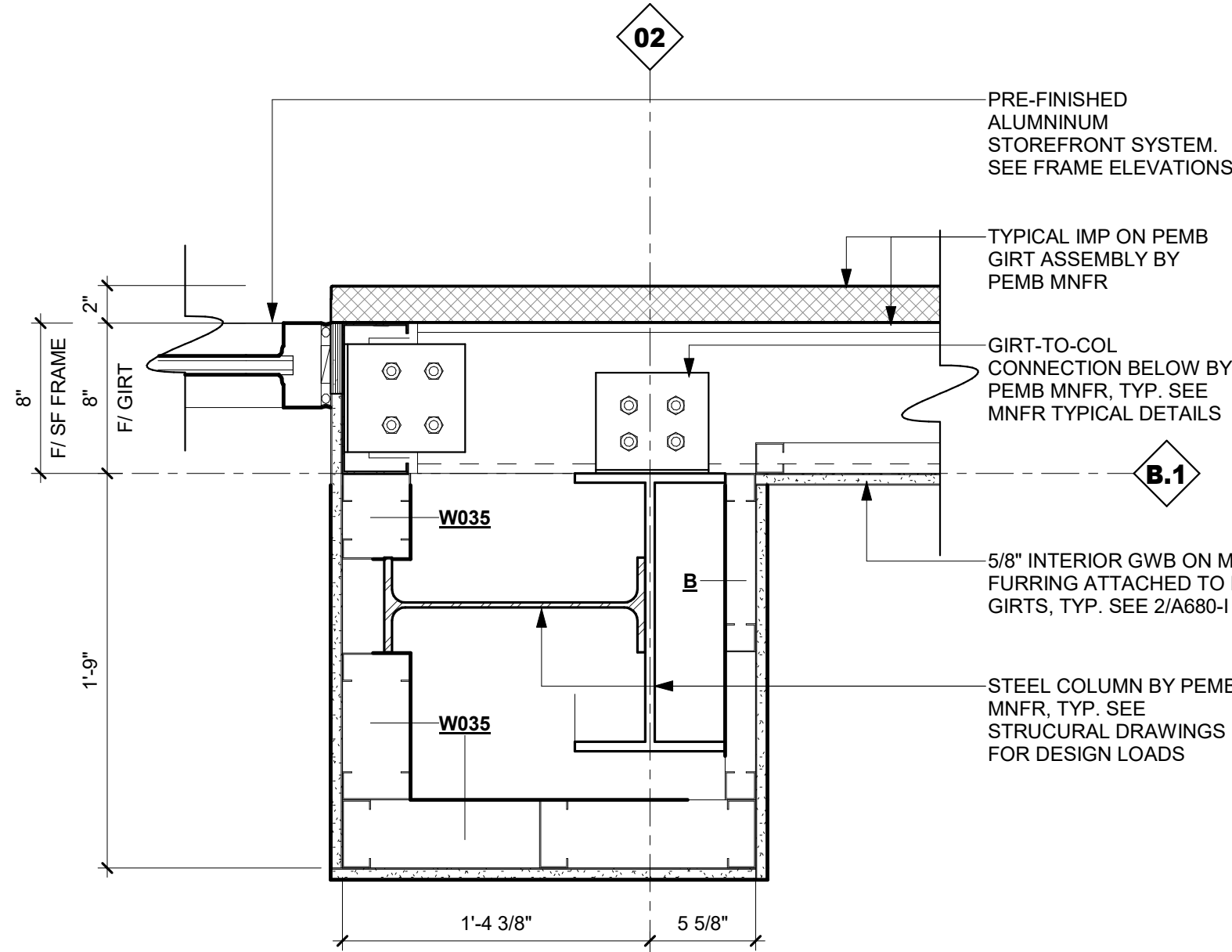
10 PLAN DETAIL
A880-I 1 1/2" = 1'-0"



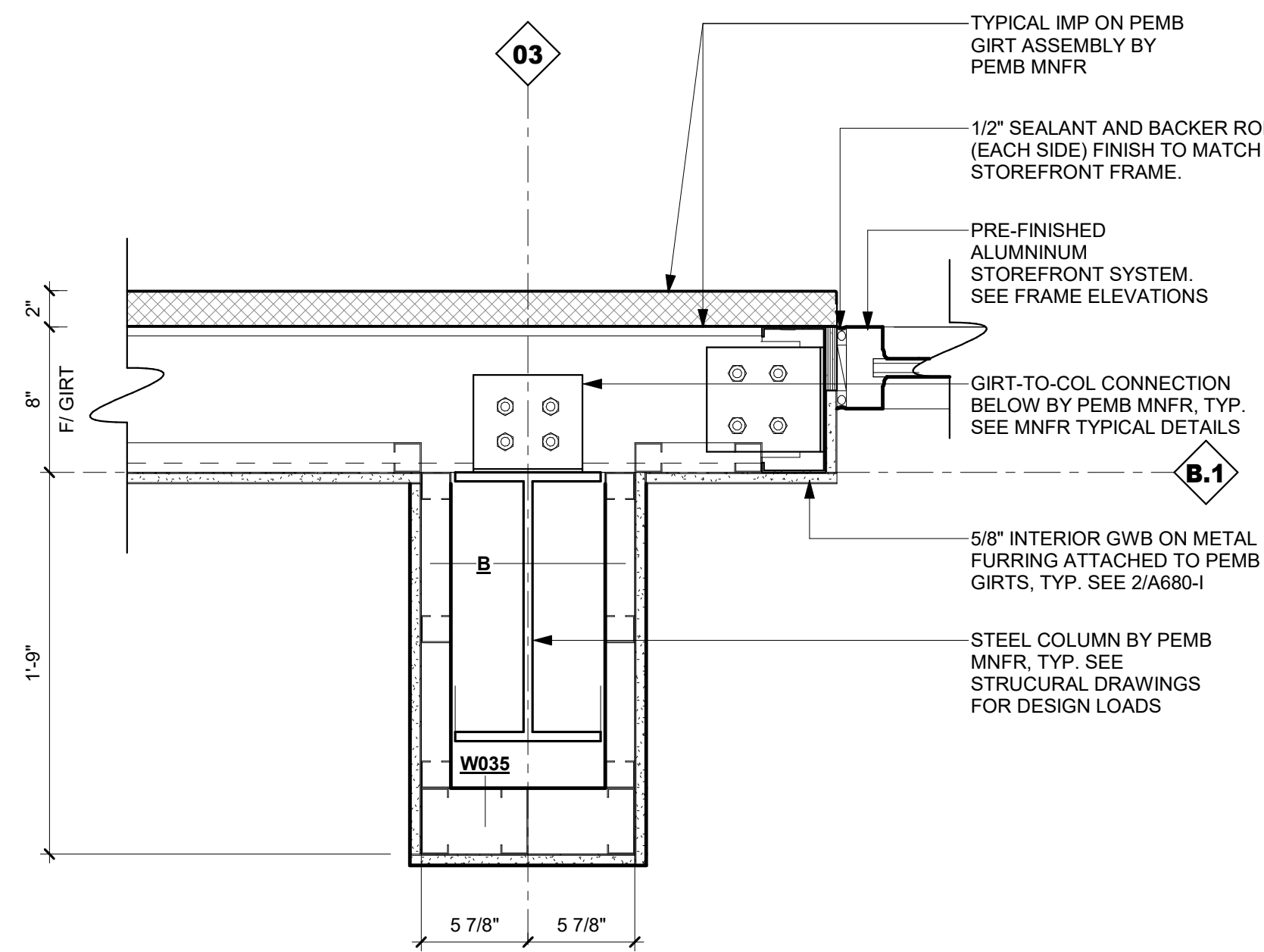
9 PLAN DETAIL
A880-I 1 1/2" = 1'-0"



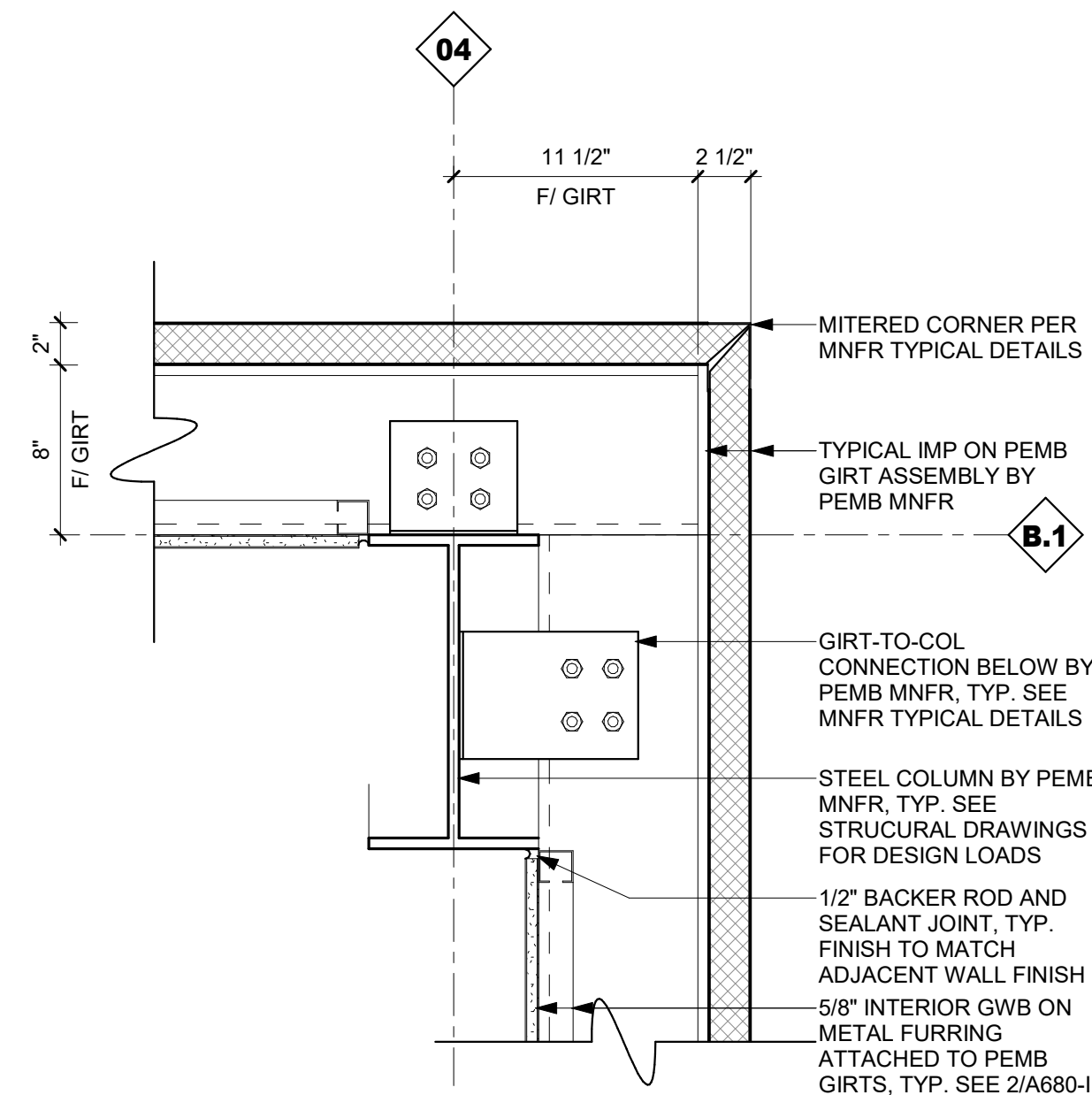
8 PLAN DETAIL
A880-I 1 1/2" = 1'-0"



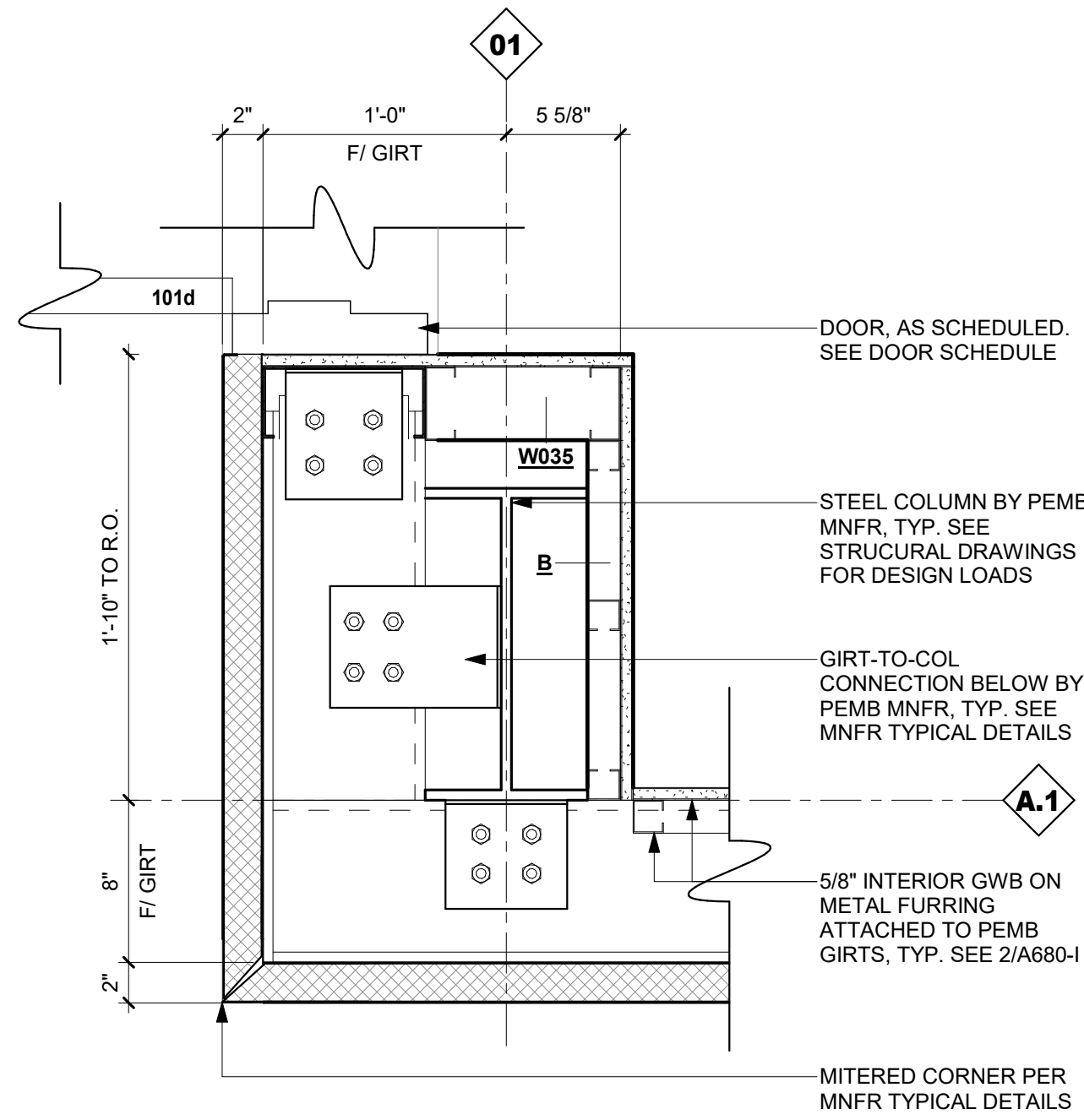
7 PLAN DETAIL
A880-I 1 1/2" = 1'-0"



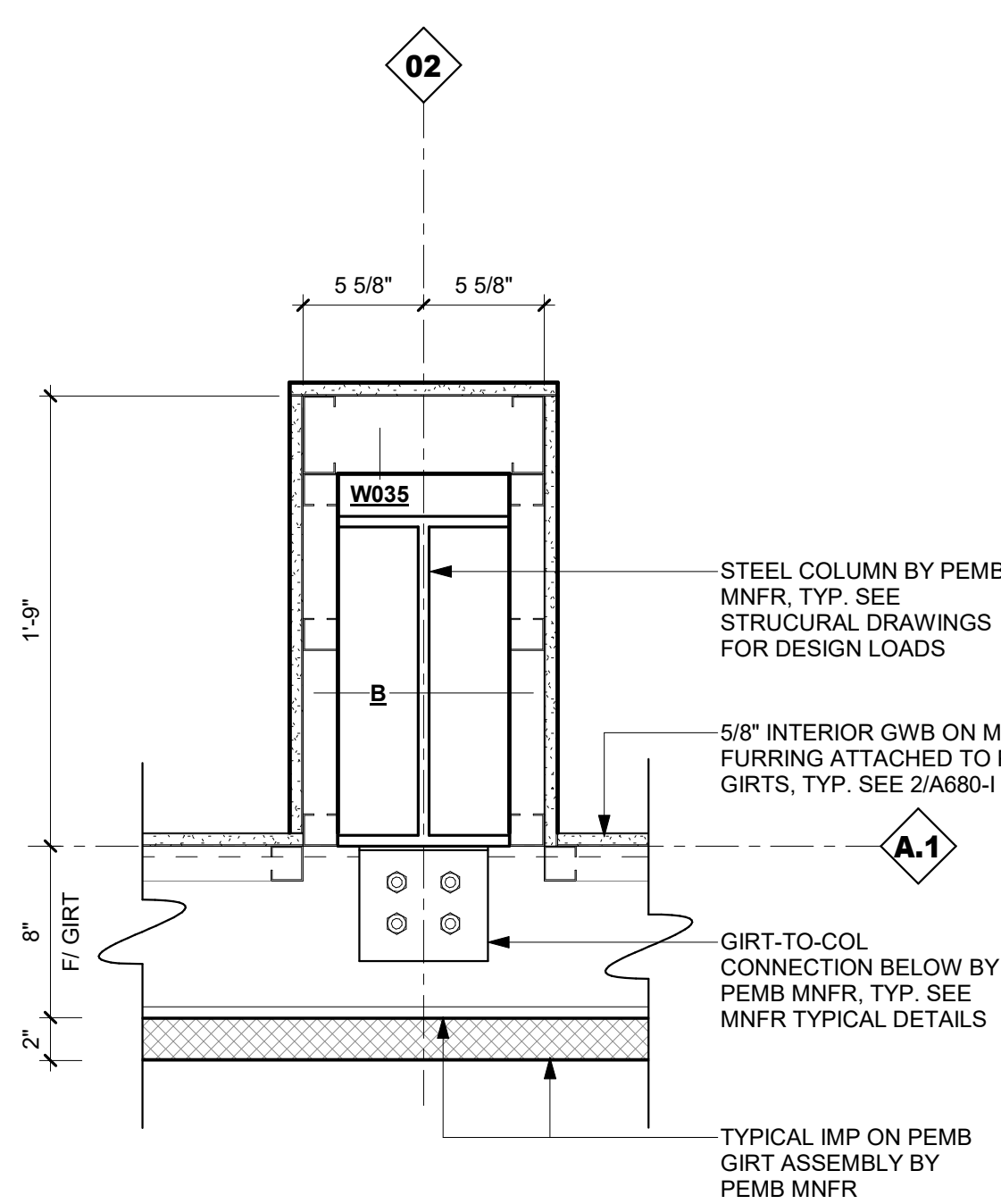
6 PLAN DETAIL
A880-I 1 1/2" = 1'-0"



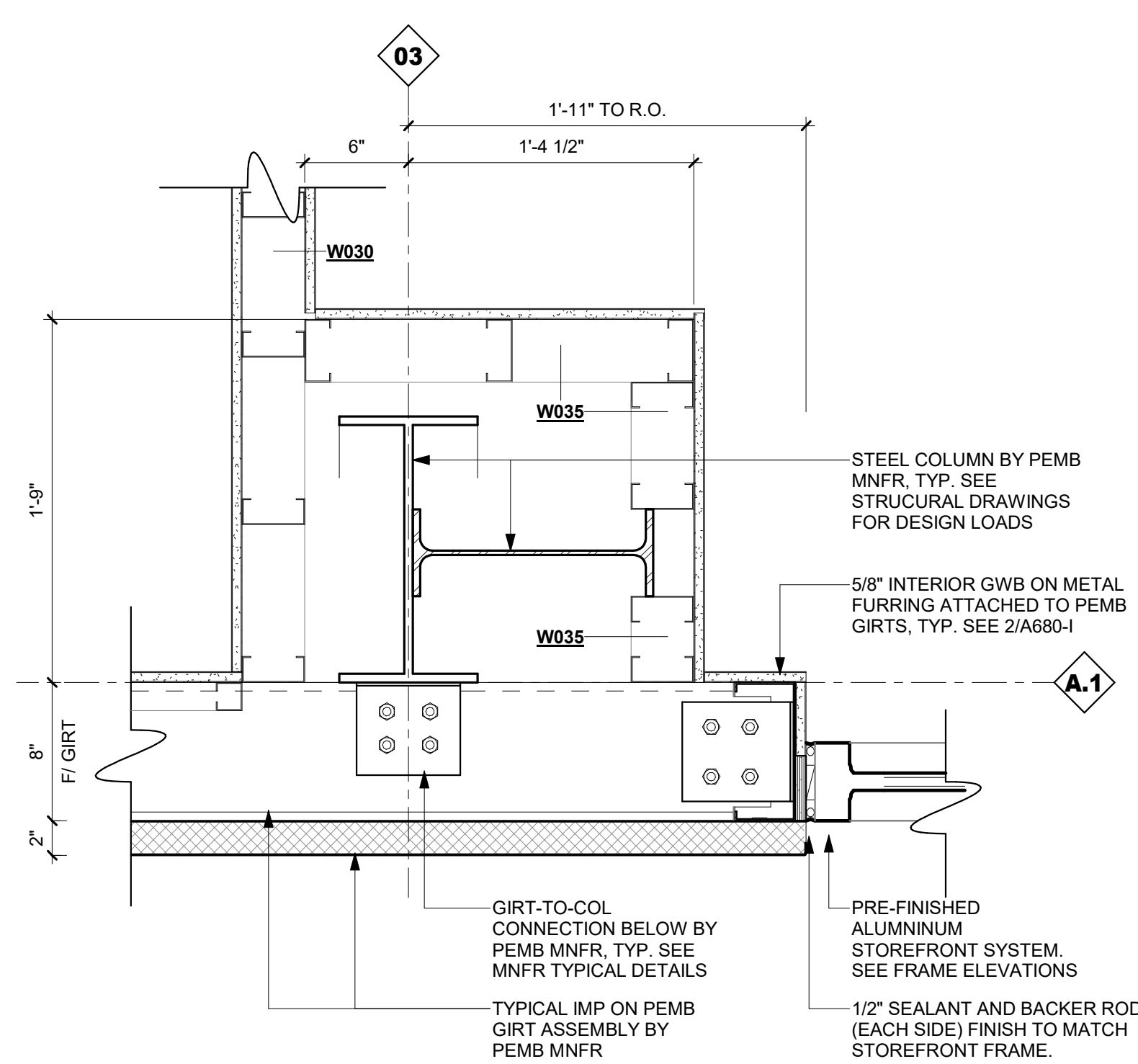
5 PLAN DETAIL
A880-I 1 1/2" = 1'-0"



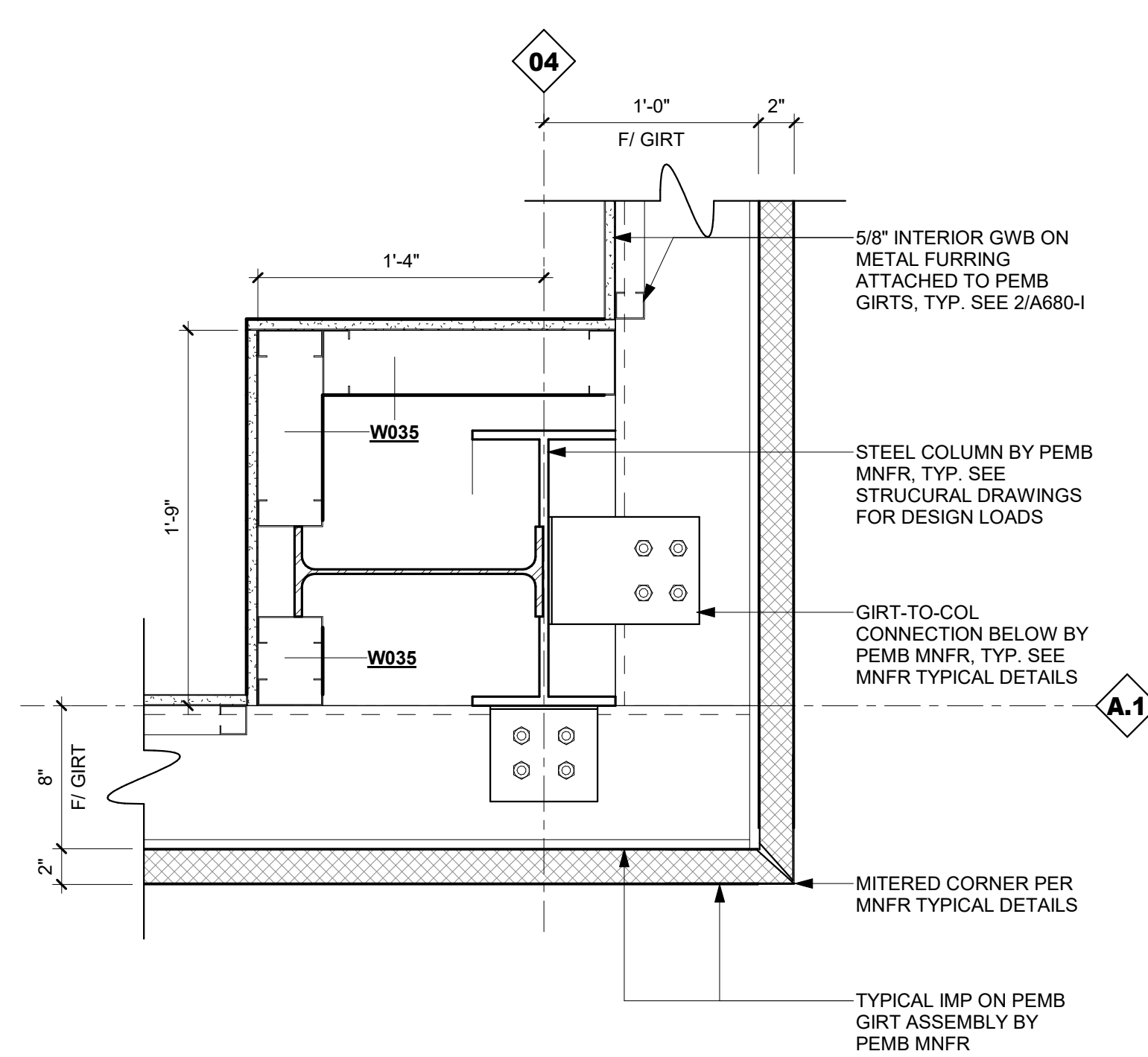
4 PLAN DETAIL
A880-I 1 1/2" = 1'-0"



3 PLAN DETAIL
A880-I 1 1/2" = 1'-0"



2 PLAN DETAIL
A880-I 1 1/2" = 1'-0"



1 PLAN DETAIL
A880-I 1 1/2" = 1'-0"

Client:

Fannin County

370 Tom Boyd Road
Blue Ridge, Georgia 30513

Project Number: 24184
Project Name:

**Fannin County Rec.
Center - Phase I**

580 Winding Drive
Blue Ridge, Georgia 30513

Key Plan:

Sheet Title:

Plan Details

Sheet Number:

A880-I